

# Data Logger

## TLOG-1100, Automatic temperature recording device using PC.

### TLOG-1100

The DAQ module that can convert mV such as 6ch. thermocouple signale to data and record it on PC.

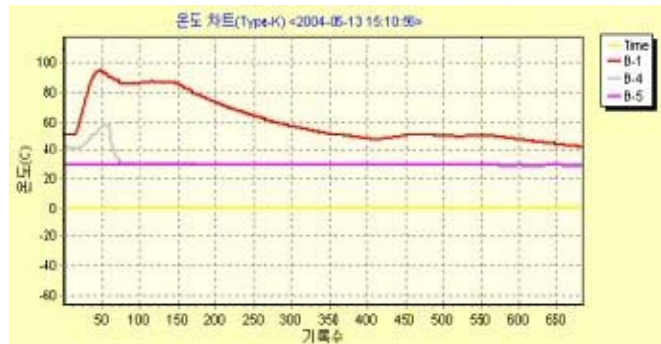


<Exterior TLOG-1100 >

- Temperature recoring for Low Cost
- Suited for the environment where isolation is required (Cable are Isolation)
- Temperature displayed on LCD
- One D/O Relay that can be controlled on PC
- \* LCD display will be fixed with K-Type Temperature when released from factory. Can be customized show mV and other temp. type o display as required

### Functions of TLOG-1100 PC Program (SDLog)

- Automatic temp. conversion of thermocouple J, K, R type
- Real time data display on the chart and data backup
- Able to collect real time data on a remote network
- Alarming function of maximum and minimum figures: sound and change the display color
- Able to measure 12 channels at the same time (when use two boards and two serial ports)
- Data are saved as Excel or Text file formats
- Able to adjust the interval of data sampling
- Chart pictures are saved as clipboard are saved as files.
- Provided various chart formats  
(Y: mV, °C, X:Count, hh:mm:ss, sec)
- Convenient managing and reading of data
- Sampling data sub when referring



<Example for SDLog Program>

### TLOG 제품사양

General	Size : 139 x 86 x 35 mm, Power : 12V/300mA, Ambient Temperature : -20°C ~ 50°C	
No. of Channel	6ch + Room Temp. 1ch	
Input Signals	Voltage, Thermocouple mV, ADC Chip PGA setup	
Thermocouple type and Measuring Range	K-Type: -200 ~ 1200°C, T-Type: -200 ~ 350°C, J-Type: -40 ~ 1200°C,	
Resolution	24bit ADC, Thermocouple mode at 19bit	
Main Parts	MCU: PIC16F876-I/SP, ADC: Burr-Brown ADS1241E Thermister Sensor: AD22100AR, Voltage Reference: MCP1525T	
Components	1. TLOG-1100 Module	*** Option
	2. SDLog Program CD	- shielded RS-232C Cable
	3. RS-232C Cable	- Thermocouple
	4. 12V DC Adapter	



DAE YOUNG CORPORATION

대 영 상 사

TEL.:0505-922-1074 FAX.:0505-922-1075

<http://www.daeyoungco.com>